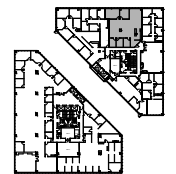


# SUITE 205N

2,767 RSF

October 31, 2022



KEY PLAN  
SCALE: N.T.S.

**F**  
 BAHAREA LARSEN  
 blarsen@feldmanequities.com  
 KELLEY IAQUINTA  
 kiaquinta@feldmanequities.com  
 813-579-3934

**CITY CENTER**  
 100 SECOND AVENUE SOUTH, ST. PETERSBURG, FLORIDA 33701

**CMK Design Studio, Inc.**  
 Planning & Design of the Built Environment  
 6822 22nd Ave. N. #148  
 St. Petersburg, Florida 33710  
 Ph: 727.515.8461

LIC NO: AA26002603